

Original

# Adherence to nutritional recommendations in vending machines at secondary schools in Madrid (Spain), 2014–2015



Doris Xiomara Monroy-Parada<sup>a,b,\*</sup>, María Luisa Jácome-González<sup>a</sup>, María Ángeles Moya-Geromini<sup>a</sup>, Fernando Rodríguez-Artalejo<sup>c</sup>, Miguel Ángel Royo-Bordonada<sup>a</sup>

<sup>a</sup> National School of Health, Carlos III Institute of Health, Madrid, Spain

<sup>b</sup> Service of Preventive Medicine and Public Health, Albacete University Teaching Hospital Complex, Albacete, Spain

<sup>c</sup> Department of Preventive Medicine and Public Health, Universidad Autónoma de Madrid /IdiPaz, CIBERESP, and IMDEA-Food Institute, CEI UAM+CSIC, Madrid, Spain

## ARTICLE INFO

### Article history:

Received 23 January 2017

Accepted 17 May 2017

Available online 13 July 2017

### Keywords:

Childhood obesity

Vending machines

Secondary education

Madrid

## ABSTRACT

**Objective:** To describe the nutritional content of products offered in food and drink vending machines at secondary schools in the Madrid Autonomous Community (Spain), and to evaluate these items' adherence to the nutritional recommendations of the National Health System Consensus Document on School Food. **Methods:** Cross-sectional study of a sample of 330 secondary schools in Madrid across the period 2014–2015. Secondary school vending machines were identified by telephone interview. The products offered in a representative sample of six machines were identified by inspection *in situ*, and their nutritional composition was obtained from the labelling.

**Results:** A total of 94.5% of the 55 products on offer failed to comply with at least one nutritional criterion of the Consensus Document on School Food. The recommendation relating to sugar content registered the highest level of non-compliance, with 52.7% of products, followed by the recommendations relating to energy (47.3%) and fats (45.5%). The mean number of unmet criteria was 2.2, with this figure being higher in foods than in drinks (2.8 versus 1;  $p < 0.01$ ).

**Conclusion:** Almost all the products on display in secondary school vending machines in Madrid were in breach of the Consensus Document on School Food, mainly due to an excess of calories, sugars and fats. Compulsory nutritional criteria and a procedure for monitoring adherence should be established, specifying those responsible for performing this task and the corrective measures to be applied in the event of non-compliance.

© 2017 SESPAS. Published by Elsevier España, S.L.U. This is an open access article under the CC BY-NC-ND license (<http://creativecommons.org/licenses/by-nc-nd/4.0/>).

## Adherencia a las recomendaciones nutricionales en máquinas expendedoras en centros de enseñanza secundaria de Madrid (España), 2014–2015

## RESUMEN

### Palabras clave:

Obesidad infantil

Máquinas expendedoras

Enseñanza secundaria

Madrid

**Objetivo:** Describir el contenido nutricional de los productos ofertados en las máquinas expendedoras de alimentos y bebidas de los centros de educación secundaria de la Comunidad de Madrid (España), y evaluar su adherencia a las recomendaciones nutricionales del Documento de Consenso del Sistema Nacional de Salud sobre la Alimentación en los Centros Educativos.

**Métodos:** Estudio transversal sobre una muestra de 330 centros de educación secundaria de la Comunidad de Madrid durante 2014–2015. Las máquinas expendedoras se identificaron mediante entrevista telefónica. Los productos ofertados en una muestra representativa de seis máquinas se identificaron mediante inspección *in situ*, y su composición nutricional se obtuvo del etiquetado.

**Resultados:** El 94,5% de los 55 productos ofertados incumplía al menos uno de los criterios nutricionales del documento de consenso. La recomendación relativa al contenido de azúcares presentó el mayor grado de incumplimiento, con un 52,7% de los productos, seguida de las relativas a la energía (47,3%) y las grasas (45,5%). La media de criterios incumplidos fue de 2,2, siendo superior en los alimentos que en las bebidas (2,8 frente a 1;  $p < 0,01$ ).

**Conclusión:** Casi todos los productos de las máquinas expendedoras de los centros de educación secundaria de la Comunidad de Madrid incumplen el Documento de Consenso, principalmente por exceso de calorías, azúcares y grasas. Se recomienda establecer criterios nutricionales de obligado cumplimiento y un procedimiento para monitorizar la adherencia a los mismos, con identificación de sus responsables y previsión de medidas correctoras en caso de incumplimiento.

© 2017 SESPAS. Publicado por Elsevier España, S.L.U. Este es un artículo Open Access bajo la licencia CC BY-NC-ND (<http://creativecommons.org/licenses/by-nc-nd/4.0/>).

\* Corresponding author.

E-mail addresses: [dorism@sescam.jccm.es](mailto:dorism@sescam.jccm.es), [doxiomonpa1@gmail.com](mailto:doxiomonpa1@gmail.com) (D.X. Monroy-Parada).

## Introduction

The prevalence of overweight and childhood obesity in Spain is one of the highest in Europe (26% and 12.2% respectively),<sup>1</sup> along with Greece, Portugal, Italy, Malta, the United Kingdom and Ireland.<sup>2,3</sup> According to the Spanish National Health Survey, the Autonomous City of Ceuta registers the highest prevalence of childhood obesity in Spain, with 24.7%, and the Autonomous Community of Aragon the lowest, with 2.7%, versus 10.6% in Madrid.<sup>4</sup> Childhood obesity increases the risk of arterial hypertension, dyslipidaemia, diabetes and locomotor disorders, and of exacerbation of respiratory diseases such as asthma, and psychosocial disorders such as discrimination and low self-esteem.<sup>5</sup>

The causes of global childhood obesity are low physical activity, sedentarism and inappropriate diet, coupled with a high consumption of high-calorie, processed foods rich in sugars and saturated fats and poor in micronutrients, promoted by an unfavourable socio-economic environment.<sup>6,7</sup> Spanish children consume processed products in excess, whereas the consumption of fruit, vegetables and legumes is inadequate.<sup>8,9</sup> Furthermore, they have a deficit of fibre and complex carbohydrates and an excess of fats and sugars, accounting for 45.9% and 21.2% of total calorie intake respectively, far above the recommended values.<sup>10</sup> Soft drinks, fruit juices and fruit drinks contribute from 5% to 6% total calorie intake of Spanish children and adolescents,<sup>11</sup> corresponding to a mean consumption of around 200 ml/day.<sup>12</sup> Data from the Spanish National Health Survey shows that 17% of Spanish children aged 5 to 14 years consumed sugar-sweetened soft drinks daily in 2006, a figure that fell to 11% in 2011, after the 2008 economic crisis<sup>13</sup>. When looking at those children in the same age range belonging to the low socio-economic class, the figures for daily consumption of sugar-sweetened soft drinks were over 30% in 2006 and 17% in 2011.

Childhood is a crucial period for preventing overweight and obesity, since it is then that dietary habits are formed which will endure into adult ages. Hence, the special emphasis laid on the childhood population by the Strategy for Nutrition, Physical Activity and Prevention of Obesity (*Estrategia para la Nutrición, Actividad Física, Prevención de la Obesidad y Salud/NAOS*) and the choice of a school setting as a one of the priority areas for intervention.<sup>14</sup> One of the first initiatives was the 2005 Collaboration Agreement with the Spanish National Association of Automatic Vending Distributors (*Asociación Nacional Española de Distribuidores Automáticos*), aimed at impeding the access of primary-school pupils to food and drink vending machines, and improving the nutritional quality of the items on offer, including those that would contribute to a balanced diet at the expense of others with a high salt, sugar or fat content. In 2008, a study of Madrid primary schools reported negligible compliance with the agreement.<sup>15</sup> In 2010, the National Health System Interterritorial Council (NHSIC) approved the Consensus Document on School Food (*Documento de Consenso del Sistema Nacional de Salud sobre Alimentación en los Centros Educativos*),<sup>16</sup> which laid down school-canteen food guidelines and the nutritional criteria to be met by food and drinks offered in school cafeteria and vending machines.

Many studies have assessed adherence to the schools' meals recommendations by school canteens,<sup>17–20</sup> but in a literature review we found no previous research focused on the products sold in food and drink vending machines in Spain. Accordingly, this study describes the nutritional content of products found in vending machines at secondary schools (*Centros de Educación Secundaria*) in the Madrid Autonomous Community, and evaluates their adherence to the Consensus Document on School Food recommendations.

## Methods

### Study design

We conducted a cross-sectional study whose target population were secondary schools in the Madrid Autonomous Community during the 2013–2014 academic year. The list of schools was obtained from the Madrid Autonomous Community Internet Schools Portal.<sup>22</sup> In December 2013, a letter was sent to all the 801 secondary schools of Madrid encouraging them to participate in case of being selected. In January 2014, 511 secondary schools were selected by simple random sampling and contacted by telephone to seek their participation. Where a school failed to reply, the telephone invitation was repeated and the school sent the e-mail questionnaire. The non-response rate was 35.4% and the final sample comprised 330 secondary schools. The main reasons for non-participation were lack of interest in the study or lack of time and availability. Further information about the study design and sample size calculation is reported elsewhere.<sup>17,21</sup>

Of the 330 secondary schools, 57 (17.3%) had one or more vending machines, making a total of 93 such machines, with 23 (24.7%) selling food, 55 (59.2%) selling drink, and 15 (16.1%) selling a mixed range of items. In view of the similarity in the products sold by vending machines of the same type,<sup>15</sup> which depends on the products available in the market at any particular time point, we decided to include the minimum number of machines possible in this study, while maintaining the distribution by type of machine (food, drink, and mixed) similar to that of the original sample. We thus obtained a subsample of six machines, made up of one with a mixed range (16.7%), due to this being the least frequent in the original sample, two with food (33.3%), and three with drink (50%). The machines were selected from schools of every ownership type, i.e., two from private, two from public and two from subsidised schools. The sample made up of the different foods and drinks drawn from the six machines forming the subject of this study totalled 55 items.

### Collection of data and study variables

From January to May 2015, the schools housing the six selected vending machines were visited after making an appointment with the respective head teachers. All the products in the machines were identified and photographed. Information on ingredients, calorie content and nutritional composition per 100 g (foods) or 100 ml (drinks) was obtained from product labels, as in the example in [Figure 1](#). The calorie content and nutritional composition per portion was obtained by simple calculations with the portion size reported in the food packages. Where the nutritional information of any item was not visible and was not available on the company's web page, a sample item was taken from the vending machine.

The Consensus Document on School Food lays down the nutritional criteria for food and drink sold in vending machines ([Table 1](#)). The maximum value of 200 Kcal per portion was estimated as the 10% of the mean daily total caloric intake recommended for children aged 3 to 18 years (2000 Kcal); this was considered appropriate for a morning or afternoon snack. In addition, products may contain no artificial sweeteners, caffeine or other stimulants, or trans-fatty acids, other than those naturally present in dairy and meat products ( $\leq 0.5$  g per ration). [Table 1](#) also shows the equivalence of the nutritional criteria in g per portion and per 100 g of food or 100 ml of drink.<sup>16</sup>

The products offered in the vending machines were classified as foods and beverages, according to the criteria in previous research on this topic.<sup>23</sup> Like in a similar study in secondary schools in Ontario (Canada),<sup>24</sup> we included water in our analysis.



Nutritional content –

Nutritional information by 100g

Energy (Kcal)	1385KJ/ 326 kcal	Salt	<0.01 g
Total fats	<0.5 g	Carbohydrate	74 g
Saturated fats	<0.1 g	Sugar	42 g
Trans	0 g	Proteins	6.3 g

\*Information from the product

Figure 1. Example of nutritional content of a candy offered in vending machines at secondary schools in the Madrid Autonomous Community, 2014–2015.

Table 1

Nutritional criteria for food and drinks offered at schools according to the Consensus Document on School Food of the National Health System.

	Content per portion <sup>a</sup>	Content per 100 g	Content per 100 ml
Energy	≤200 kcal	≤400 kilocalories	≤100 kilocalories
Total fats (≤35%) <sup>b</sup>	≤7.8 g	≤15.6 g	≤3.9 g
Saturated fats (≤10%) <sup>b</sup>	≤2.2 g	≤4.4 g	≤1.1 g
Trans-fatty acids	≤0.5 g	≤1 g	≤0.25 g
Sugar (≤30%) <sup>b</sup>	≤15 g	≤30 g	≤7.5 g
Salt/sodium	≤0.5 g salt/200 mg sodium	≤1 g salt/400 mg sodium	≤0.25 g/100 mg sodium

<sup>a</sup> Assuming packages or portions of 50 g for solid foods and 200 ml for drinks, which are the most common on the market.

<sup>b</sup> Percentage of total caloric intake content of the product.

Source: Consensus Document on School Food of the National Health System (Documento de Consenso del Sistema Nacional de Salud sobre Alimentación en los Centros Educativos).<sup>16</sup>

Statistical analysis

We calculated the average content of each nutrient per portion and per 100 g, and its equivalence in percentage terms with respect to the total calorie content. Degree of adherence to the Consensus Document on School Food was calculated by reference to the percentage of products that failed to comply with the corresponding nutritional criteria (energy, total fat, saturated fats, trans-fatty acids, sugars, artificial sweeteners and salt/sodium). We also calculated the percentage of products that were in breach of World Health Organisation (WHO) sugar guidelines.<sup>25</sup> A product was deemed non-compliant with the Consensus Document on School Food, if it was in breach of at least one of its criteria, with the number of unmet criteria per product then being calculated. To compare food and drink in terms of their respective percentages of non-compliance with the various nutritional criteria, we used the chi-squared test or Fisher’s exact test, and to compare the mean

number of unmet criteria we used the Mann-Whitney U-test. Statistical significance was set at <0.05. All statistical analyses were performed using the Stata 14.0 computer software programme.<sup>26</sup>

Results

The nutritional content of the 55 food and drink products is shown in Table 2. The average portion size was 56.4 g for foods and 267.2 ml for drinks. Every portion of product provided a mean of 186.1 kcal; of this, 31.1% came from sugars, 5.1% from proteins, 39% from total fats, and 14.8% from saturated fats. A comparison between these figures and the nutritional goals of the Spanish Society for Community Nutrition (*Sociedad Española de Nutrición Comunitaria*)<sup>27</sup> and the WHO sugar guidelines,<sup>25</sup> led to the conclusion that the products sold in the machines had an excessive sugar and fat (total and saturated) content and were low in complex carbohydrates.

Table 2

Mean nutritional content of food and drinks products offered in vending machines at secondary schools in the Madrid Autonomous Community, 2014–2015.

	Sample of products (n = 55)				
	Nutritional profile per portion (mean)	Nutritional profile per 100 g of product (mean)	Kcal <sup>a</sup>	Percentage with respect to total kcal	Recommended intake <sup>b</sup>
Kcal	186.1	313.1	313.1	100.0	200 kcal
Proteins (g)	2.4	4.0	16.1	5.1	10–20%
Carbohydrates (g)	24.9	33.2	132.8	42.4	50–55%
Sugars (g)	19.2	24.4	97.4	31.1	<10% <sup>c</sup>
Total fats (g)	6.4	13.6	122.0	39.0	30–35%
Saturated fats (g)	2.5	5.1	46.3	14.8	7–8%
Sodium, (mg)	64.5	96.1	–	–	<2 g/day

<sup>a</sup> Protein and carbohydrates are deemed to supply 16.736 kJ/g (4 kcal/g), and fats, 37.656 kJ/g (9 kcal/g).

<sup>b</sup> Nutritional goals of the Spanish Society for Community Nutrition (*Sociedad Española de Nutrición Comunitaria*) for the Spanish population.<sup>25</sup>

<sup>c</sup> The goal for sugars was taken from the WHO guidelines.<sup>23</sup>

**Table 3**  
Percentage of global non-adherence to the Consensus Document on School Food criteria in food and drinks offered in vending machines at secondary schools in the Madrid Autonomous Community, 2014–2015.

Products	Food and drinks offered		Non-adherence	
	n	%	n	%
<i>Drinks</i>				
Bottled water	1	1.8	0	0
Fruit juices and drinks	5	9.1	5	100
Sugar-sweetened drinks	10	18.2	9	90
Sports drinks and flavour additives/enhancers (including diet varieties)				
Milk drinks	2	3.6	2	100
Total drinks	18	32.7	16	88.8
<i>Foods</i>				
Potato products, fried (excluding chips)	3	5.5	3	100
Cakes, buns, biscuits, pies and pastries	14	25.5	14	100
Snack foods, including chips, extruded snacks, popcorn, snack and granola bars, sugar-sweetened fruit and vegetable products, and sugar-coated or salted nuts	9	16.3	9	100
Sandwiches	1	1.8	0	0
Chocolate and confectionery (including regular and sugar-free chewing gum and sugar)	10	18.2	10	100
Total foods	37	67.3	36	97.2
<i>Total</i>	55	100	52	94.5

Most products (67.3%) were foods. Table 3 shows that 94.5% of products failed to comply with at least one of the Consensus Document on School Food nutritional criteria, with this percentage being lower for drinks than for foods (88.8% versus 97.8%;  $p=0.25$ ). The two milk drinks were in breach of the Consensus Document (*Bifrutas* Tropical Pineapple and *Pascual* Chocolate Milkshake); and of the remaining drinks, only two (water and *Aquarius Lemon*) complied with all the nutritional criteria. Regarding foods, only a mixed sandwich met all the Consensus Document nutritional criteria.

The criterion which registered the highest rate of non-adherence was that governing sugar, with more than a half of all food and drink products being non-compliant (Figure 2). When the stricter WHO guideline criterion was applied (<10% of total caloric intake from sugar), more than two thirds (69.1%) of the products were non-compliant. A total of 47.3% of products supplied more energy than recommended, and 45.5% of them failed to comply with the criteria governing total fat. The best performance was observed for the criteria of the salt/sodium and trans-fatty acids with non-compliance rates below 25%.

Whereas the rate of non-adherence with nutritional criteria for foods ranged from 2.7% for artificial sweeteners to 70.3% for energy, drinks were only non-compliant in the case of sugars and artificial sweeteners, with rates of 38.9% and 61.1% respectively (Table 4). According to the WHO sugar guideline, non-compliance in foods was 73% versus 61.1% in drinks, though this difference did not prove statistically significant. Differences between food and drinks in terms of non-compliance with the Consensus Document criteria were statistically significant, except in the case of trans-fatty acids and sugar.

A total of 40% of products failed to comply with only one of the Consensus Document nutritional criteria, whereas 27.2% breached four or five criteria out of a total of seven. The mean number of

**Table 4**

Comparison of percentage of non-adherence to the Consensus Document on School Food nutritional criteria between food and drinks offered in vending machines at secondary schools in the Madrid Autonomous Community, 2014–2015.

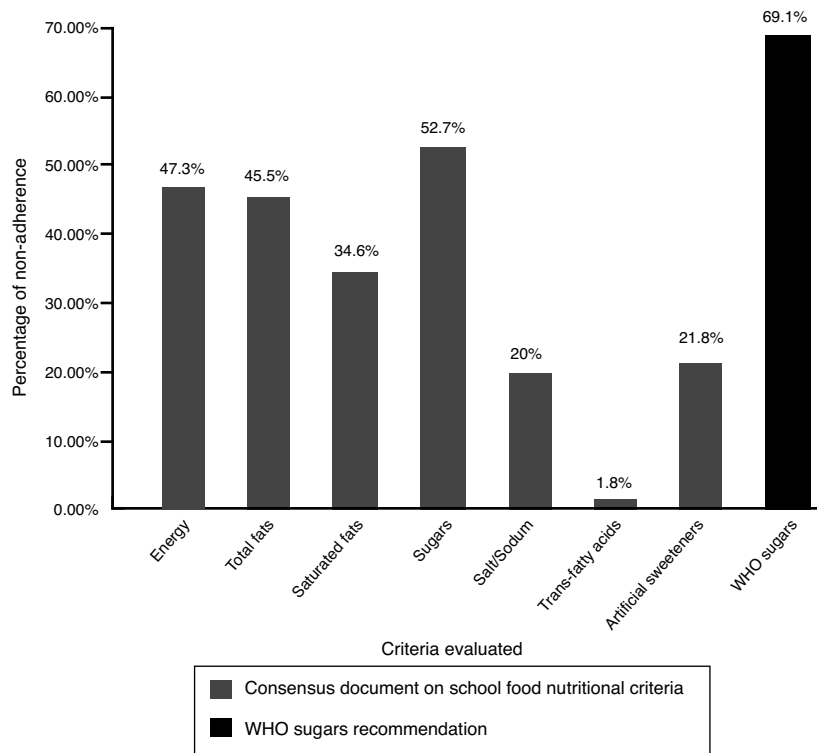
	Sample of products (n = 55)		p-value <sup>a</sup>
	Foods %	Drinks %	
Energy	70.3	0	<0.01
Total fats	67.6	0	<0.01
Saturated fats	51.4	0	<0.01
Trans-fatty acids	2.7	0	0.67
Sugars	59.5	38.9	0.13
WHO sugar guidelines	73.0	61.1	0.54
Salt/Sodium	29.7	0	0.01
Artificial sweeteners	2.7	61.1	<0.01

<sup>a</sup> Associated with Fisher's exact test statistic.

unmet criteria was 2.2 (95% confidence interval: 1.85–2.62), with this figure being higher in foods than in drinks (2.8 versus 1;  $p<0.01$ ).

## Discussion

This study shows that the products sold in secondary schools vending machines in the Madrid Autonomous Community have a high energy content, with sugars and fats being responsible for the highest caloric contribution. A total of 94.5% of products were in breach of at least one of the Consensus Document on School Food nutritional criteria, with a mean of more than two unmet criteria per product. The criterion registering the highest non-compliance rate was that of sugar (52.7% of products), followed by energy (47.3%) and fats (45.5%). The proportion of non-compliance was



**Figure 2.** Percentage of non-adherence to the Consensus Document on School Food nutritional criteria in food and drinks products offered in vending machines at secondary schools in the Madrid Autonomous Community, 2014–2015.

greater in foods than in drinks, both overall and for all the criteria analysed, with the single exception of artificial sweeteners.

A similar study covering Madrid Autonomous Community primary schools in 2008 showed that only 10% of vending machine products complied with the recommendations of the then prevailing agreement between the government authorities and Spanish National Association of Automatic Vending Distributors,<sup>15</sup> as compared to 5.5% of those that met all the Consensus Document on School Food criteria in this study. Although the figures are not directly comparable, in that they are based on different criteria, both studies reveal the high prevalence of energy-dense, nutrient-poor foods in vending machines at Madrid schools. In a previous analysis of the data from this study using the United Kingdom Nutrient Profiling Model,<sup>28</sup> as few as 19.5% of products were classified as healthy. This is mainly due to the fact that the UK nutritional profile permits a product containing artificial sweeteners to be as healthy, provided that the remaining ingredients conform to the model.<sup>21</sup> Another Madrid primary-school study in 2009, which also analysed the range of items offered by school cafeterias, found that this was dominated by soft drinks, bottled, canned and packaged juices, and industrial cakes and pastries.<sup>29</sup> Similar results were reported at an international level,<sup>30–32</sup> where vending machines mostly contain energy products, rich in fat, sugar and salt, and poor in micronutrients and fibre.

The criterion to display the lowest adherence was that governing sugar, in that over half the products exceeded the established limit. In terms of WHO guidelines, non-compliance was 69.1%. This is due to the fact that, whereas the WHO recommends limiting consumption of free sugars to 10% of total calorie intake,<sup>25</sup> the Consensus Document on School Food permits three times more, arguing that most of the products on the market have a high sugar content and that application of the WHO criterion would lead to vending machines being left unstocked. However, the Consensus Document on School Food itself saw such flexibility as being

temporary, setting a provisional limit of 30% that would spur producers to reduce the sugar in food and drinks.<sup>16</sup> Yet, five years after its publication, sugar content continues to be excessive, even by reference to lenient criteria such as those of the Consensus Document on School Food, and the practical totality of the food and drinks on offer are in breach of one or more of its criteria. The industry has not advanced in terms of reformulating its products to improve their nutritional profile.

The ready availability in vending machines of products with a high energy content, rich in sugar, salt or fat, and poor in micronutrients, is associated with a higher consumption of these products and greater risk of obesity.<sup>33,34</sup> Strategies for positive reinforcement of water consumption through teacher appraisals coupled with reduced access to sugary drinks, and reduced barriers to obtain healthy water, have led to greater water consumption in US and Mexican students.<sup>35</sup> Other strategies such as replacement of these products with others lower in calories, or the installation of water fountains in schools are effective for promoting healthier choices by pupils and preventing obesity.<sup>36–38</sup> In fact, substituting water for sugary drinks reduces the energy intake by as much as 235 kcal/day in children of all ages.<sup>39,40</sup> This evidence shows the importance of the school food environment in the prevention of childhood obesity and the need to implement rules that ensure the availability of water fountains and a healthy range of products on offer in vending machines and school cafeterias.<sup>41,42</sup> One example of these types of policies in Spain are the Draft Bill on the Promotion of an Active Life and Balanced Diet in Andalusia (*Anteproyecto de Ley para la promoción de una vida activa y una alimentación equilibrada en Andalucía*), currently under open consultation by the Andalusian Regional Authority, which will guarantee free access to drinking water in schools, public places and children's sports and recreation centres.<sup>43</sup> A step further, the Autonomous Community of Murcia has forbidden the sale of energy dense foods and drinks (rich in sugars or fat and poor in nutrients) at schools.<sup>44</sup>



In the European Union, school food policies vary widely among countries. Whilst in France and Denmark vending machines are banned at schools, Austria, Portugal and Scotland prohibit the marketing of unhealthy products, and a third group of countries only issue recommendations about products to be offered in vending machines.<sup>45</sup> This latter group includes Spain, which has issued a series of recommendations that the Autonomous Communities may or may not implement. Added to this is the fact that little is known about the Consensus Document in schools<sup>17</sup> and that there is a lack of qualified staff to assess the type of products being sold in the machines: indeed, the Consensus Document on School Food stipulates that the persons or companies responsible for supplying and servicing the vending machines are also to be responsible for checking that the products comply with the guideline criteria,<sup>16</sup> thus leaving this decision in the hands of third parties with conflicts of interest.

Hence, it is necessary to draw up stricter nutritional criteria, and disseminate them among food producers, venders, parents, teachers and school staff in charge of procurement and supervision of the food supply at schools, as well as to establish a system that ensures compliance with the Consensus Document recommendations. In view of the failure of a system based exclusively on voluntary recommendations, in order to prompt manufacturers to reduce sugar and offer healthier products, we feel that the new nutritional criteria should not only be in line with those of the WHO, but should also be compulsory. The experiences of the United Kingdom and France show that these measures are very effective when there are sufficient resources for their implementation and follow-up;<sup>46,47</sup> also the experience of Mexico shows how the effectiveness can be compromised when there is a lack of resources and effective accountability and monitoring mechanisms to implement and assess nutrition policies.<sup>48</sup> Currently, the school community in Madrid is not fully aware of the Consensus Document on School Food and lacks a formal system for monitoring and evaluating the nutritional quality of the products offered in vending machines. This situation can only improve with adequate resources, which ultimately rely on the political will of the national and regional authorities. Some Autonomous Communities, like Andalucía and Islas Baleares, are planning to make the nutritional criteria of the Consensus Document compulsory, and to set systems to assess its implementation.<sup>43,49</sup>

While the high percentage of non-response on the part of the secondary schools is a limitation of this study, the characteristics of the schools that agreed and those that refused to participate in the study were nonetheless similar.<sup>21</sup> Furthermore, though the Consensus Document on School Food recommendations are applicable nationwide, the scope of the study was limited to the Madrid Autonomous Community, so the results might not be extrapolated to the rest of the country. The main strength of this study was that it is the first in Spain to evaluate adherence to the Consensus Document on School Food recommendations in secondary schools vending machines. Accordingly, it could serve as a reference for analysing the trend in the nutritional quality of such products and their degree of adherence to this Document in Madrid.

In conclusion, the practical totality of food and drinks on offer in vending machines at Madrid secondary schools are in breach of the Consensus Document on School Food recommendations, mainly due to an excess of calories, sugars and fats. The high sugar content of most of the products is particularly worrying, and we suggest that the maximum permitted should be reduced to 10% of their total calorie content, as recommended by the WHO. Moreover, the Consensus Document nutritional criteria should be made compulsory, and an appropriate follow-up system should be set up. This recommendation has been recently embraced by the Spanish Alliance for a Healthy Diet, a group of non-government organizations, including public health associations, aimed to promote food policies for

the prevention of obesity and non-transmissible diseases related with unhealthy food habits.<sup>50</sup>

#### **What is known about the topic?**

The 2005 agreement between the food industry and the Spanish Health Department was not effective in promoting a supply of healthy food products at vending machines in schools. In 2010, the government approved a set of national recommendations with nutritional criteria for foods offered at schools.

#### **What does this study add to the literature?**

Almost no food or drink offered in vending machines at Madrid (Spain) schools follows the Spanish nutritional recommendations, being most products high in calories, sugar or fat. It is advisable to make nutritional criteria for foods at schools compulsory, and provide sufficient resources for their implementation and follow-up in order to guarantee its effectiveness.

#### **Editor in charge**

Laura I. González Zapata.

#### **Transparency declaration**

The corresponding author on behalf of the other authors guarantee the accuracy, transparency and honesty of the data and information contained in the study, that no relevant information has been omitted and that all discrepancies between authors have been adequately resolved and described.

#### **Authorship contributions**

M.A. Royo-Bordonada designed the study. M.L. Jácome-González and M.A. Moya-Geromini participated in data-collection, -processing and -analysis. D.X. Monroy-Parada wrote the first draft of the paper with the help of M.L. Jácome-González and M.A. Royo-Bordonada; and F. Rodríguez-Artalejo made important contributions. All authors contributed to the revision and approval of the final manuscript.

#### **Funding**

This project has been partially supported by the Spanish Health Research Fund of the Institute of Health Carlos III (Project ENPY 1015/13) and Asociación Madrileña de Salud Pública.

#### **Conflicts of interest**

None.

#### **Acknowledgements**

The authors thank María José Bosqued and Lázaro López for her help in data collection and the contact with the schools.

This article presents independent results and research. The views expressed are those of the authors and not necessarily those of the Instituto de Salud Carlos III.

## References

- Sánchez-Cruz JJ, Jiménez-Moleón JJ, Fernández-Quesada S, et al. Prevalencia de obesidad infantil y juvenil en España en 2012. *Rev Esp Cardiol.* 2013; 66(Supl 5):371–6.
- European World Health Organization. Methodology and summary: country profiles on nutrition, physical activity and obesity in the 53 WHO European Region Member States. Copenhagen: WHO Regional office for Europe 2013. (Accessed 10 March 2016.) Available at: [http://www.euro.who.int/\\_data/assets/pdf.file/0004/243337/Summarydocument-53-MS-country-profile.pdf?ua=1](http://www.euro.who.int/_data/assets/pdf.file/0004/243337/Summarydocument-53-MS-country-profile.pdf?ua=1)
- Fleming T, Robinson M, Thomson B, et al. Global, regional, and national prevalence of overweight and obesity in children and adults during 1980–2013: a systematic analysis for the Global Burden of Disease Study 2013. *Lancet.* 2014;384(Suppl 9945):766–81.
- Ministerio de Sanidad, Servicios Sociales e Igualdad. Indicadores clave del Sistema Nacional de Salud: Determinantes Biológicos INCLASNS. (Accessed 15 March 2016.) Available at: <http://inclasns.msssi.es/main.html>
- Ebbeling CB, Pawlak DB, Ludwig DS. Childhood obesity: public-health crisis, common sense cure. *Lancet.* 2002;360:473–82.
- Pate RR, O'Neill JR, Liese AD, et al. Factors associated with development of excessive fatness in children and adolescents: a review of prospective studies. *Obes Rev.* 2013;14:645–58.
- Swinburn BA, Sacks G, Hall KD, et al. The global obesity pandemic: shaped by global drivers and local environments. *Lancet.* 2011;378:804–14.
- Rodríguez-Artalejo F, Garcés C, Gorgojo L, et al. Dietary patterns among children aged 6–7 y in four Spanish cities with widely differing cardiovascular mortality. *Eur J Clin Nutr.* 2002;56:141–8.
- Aranceta J, Pérez-Rodrigo C, Ribas L, et al. Sociodemographic and lifestyle determinants of food patterns in Spanish children and adolescents: the enKid study. *Eur J Clin Nutr.* 2003;57(Suppl 1):S40–4.
- Royo-Bordonada MA, Gorgojo L, Martín-Moreno JM, et al. Spanish children's diet: compliance with nutrient and food intake guidelines. *Eur J Clin Nutr.* 2003;57(Suppl 8):930–9.
- Ruiz E, Ávila JM, Valero T, et al. Macronutrient distribution and dietary sources in the Spanish population: findings from the ANIBES study. *Nutrients.* 2016;8:177.
- Guelinckx I, Iglesia I, Bottin JH, et al. Intake of water and beverages of children and adolescents in 13 countries. *Eur J Nutr.* 2015;54(Suppl 2):69–79.
- Ramiro-González M, Sanz-Barbero B, Royo-Bordonada MA. Childhood excess weight in Spain from 2006 to 2012. Determinants and parental misperception. *Rev Esp Cardiol.* 2017 Mar 18. pii: S1885-5857(17)30096-8. [Epub ahead of print].
- Agencia Española de Seguridad Alimentaria. Estrategia para la nutrición, actividad física y prevención de la obesidad (NAOS). Madrid: Agencia Española de Seguridad Alimentaria; 2005.
- Royo-Bordonada MA, Martínez-Huedo MA. Evaluation of compliance with the self-regulation agreement of the food and drink vending machine sector in primary schools in Madrid, Spain, in 2008. *Gac Sanit.* 2014;28(Supl 1):65–8.
- Agencia Española de Seguridad Alimentaria y Nutrición. Documento de Consenso sobre la alimentación en los centros educativos. Madrid: AESAN; 2010. (Accessed 15 March 2016.) Available at: [http://www.aecosan.msssi.gob.es/AECOSAN/docs/documentos/nutricion/educanaos/documento\\_consenso.pdf](http://www.aecosan.msssi.gob.es/AECOSAN/docs/documentos/nutricion/educanaos/documento_consenso.pdf)
- Berradre-Sáenz B, Royo-Bordonada MA, Bosqued MJ, et al. Menú escolar de los centros de enseñanza secundaria de Madrid: conocimiento y cumplimiento de las recomendaciones del Sistema Nacional de Salud. *Gac Sanit.* 2015;29(Supl 5):341–6.
- PREME. Programa de revisió de menús escolars. Memòria 2006-2012. Barcelona: Agència de Salut Pública de Catalunya; 2012. Available at: [http://salutweb.gencat.cat/web/.content/home/ambits.tematics/per\\_perfiles/centres.educatius/menus\\_escolars/programa\\_revisio\\_programacions\\_menus\\_escolars.catalunya\\_preme/documents/arxiu/memo\\_preme\\_2012.pdf](http://salutweb.gencat.cat/web/.content/home/ambits.tematics/per_perfiles/centres.educatius/menus_escolars/programa_revisio_programacions_menus_escolars.catalunya_preme/documents/arxiu/memo_preme_2012.pdf)
- AsturSalud. Estudio del menú en los comedores de Asturias. Principado de Asturias: Asturias Salud; 2010. Available at: [https://www.asturias.es/AsturSalud/Ficheros/AS\\_Salud%20Publica/AS\\_Promocion%20de%20la%20Salud/ESTRATEGIA%20NAOS/Bolet%3Adn%201%20-%20Comedores%20Escolares%20de%20Asturias.pdf](https://www.asturias.es/AsturSalud/Ficheros/AS_Salud%20Publica/AS_Promocion%20de%20la%20Salud/ESTRATEGIA%20NAOS/Bolet%3Adn%201%20-%20Comedores%20Escolares%20de%20Asturias.pdf)
- Uriarte P, Larrea F, Alonso S. Características nutricionales de los menús escolares en Bizkaia (País Vasco, España) durante el curso 2012/2013. *Nutr Hosp.* 2014;31(Supl 3):1309–16. Available at: <http://www.aulamedica.es/gdcr/index.php/nh/article/viewFile/8069/pdf/7917>
- Monroy-Parada DX, Moya MA, Bosqued MJ, et al. Presencia de máquinas expendedoras de alimentos y perfil nutricional de sus productos en los institutos de enseñanza secundaria de la Comunidad de Madrid, 2014–2015. *Rev Esp Salud Pública.* 2016;90:e1–9.
- Comunidad de Madrid. Portal Escolar. (Accessed 03 December 2013.) Available at: <http://www.madrid.org/wpad/pub/run/j/Inicio.icm>
- Kelly B, Halford JCG, Boyland EJ, et al. Television food advertising to children: a global perspective. *Am J Public Health.* 2010;100:1730–6.
- Orava T, Manske S, Hanning R. Beverages and snacks available in vending machines from a subset of Ontario secondary schools: do offerings align with provincial nutrition standards? *Can J Public Health.* 2016;107:417–23.
- World Health Organization. Guideline: Sugars intake for adults and children. Geneva: WHO; 2014. (Accessed 4 July 2016.) Available at: [http://apps.who.int/iris/bitstream/10665/149782/1/9789241549028\\_eng.pdf](http://apps.who.int/iris/bitstream/10665/149782/1/9789241549028_eng.pdf)
- StataCorp. 2014 Stata Statistical Software: Release 12. College Station, TX: StataCorp LP; 2014.
- Serra Majem LI, Aranceta Bartrina J. Objetivos nutricionales para la población española. Consenso de la Sociedad Española de Nutrición Comunitaria 2011. *Rev Esp Nutr Comunitaria.* 2011;17:178–99.
- Department of Health. Nutrient profiling technical guidance. United Kingdom: Department of Health; 2011. Available at: [https://www.gov.uk/government/uploads/system/uploads/attachment\\_data/file/216094/dh\\_123492.pdf](https://www.gov.uk/government/uploads/system/uploads/attachment_data/file/216094/dh_123492.pdf)
- Confederación de Asociaciones de Consumidores y Usuarios de Madrid. Estudio sobre la oferta de bebidas y comida en máquinas expendedoras y cafeterías de los colegios de la Comunidad de Madrid. Madrid: CECU; 2011 (Accessed 15 March 2016.) Available at: [http://cecumadrid.org/web/images/stories/pdf/P\\_estudio\\_oferta\\_alimentacin\\_y\\_bebida\\_en\\_colegios\\_madrid.Parte1.pdf](http://cecumadrid.org/web/images/stories/pdf/P_estudio_oferta_alimentacin_y_bebida_en_colegios_madrid.Parte1.pdf) and [http://cecumadrid.org/web/images/stories/pdf/P\\_estudio\\_oferta\\_alimentacin\\_y\\_bebida\\_en\\_colegios\\_madrid.Parte2.pdf](http://cecumadrid.org/web/images/stories/pdf/P_estudio_oferta_alimentacin_y_bebida_en_colegios_madrid.Parte2.pdf)
- Byrd-Bredbenner C, Johnson M, Quick V, et al. Sweet and salty. An assessment of the snacks and beverages sold in vending machines on US post-secondary institution campuses. *Appet.* 2012;58(Supl 3):1143–51.
- Pasch K, Lytle L, Samuelson A, et al. Are school vending machines loaded with calories and fat? an assessment of 106 middle and high schools. *J Sch Health.* 2011;81(Supl 4):212–8.
- Cisse-Egbuonye N, Liles S, Schmitz K, et al. Availability of vending machines and school stores in California schools. *J Sch Health.* 2016;86(Suppl 1):48–53.
- Rovner AJ, Nansel TR, Wang J, et al. Food sold in school vending machines is associated with overall student dietary intake. *J Adolesc Health.* 2011;48(Suppl 1):13–9.
- Mässe LC, de Niet-Fitzgerald JE, Watts AW, et al. Associations between the school food environment, student consumption and body mass index of Canadian adolescents. *Int J Behav Nutr Phys Act.* 2014;11(Suppl 1):29.
- Elder JP, Holub CK, Arredondo EM, et al. Promotion of water consumption in elementary school children in San Diego, USA and Tlaltizapan, Mexico. *Salud Publica Mex.* 2014;56(Supl 2):s148–56.
- Mayne SL, Auchincloss AH, Michael YL. Impact of policy and built environment changes on obesity-related outcomes: a systematic review of naturally occurring experiments. *Obes Rev.* 2015;16:362–75.
- Muckelbauer R, Libuda L, Clausen K. Promotion and provision of drinking water in schools for overweight prevention: randomized, controlled cluster trial. *Pediatrics.* 2009;123:661–7.
- Kocken PL, Eeuwijk J, Van Kesteren NM, et al. Promoting the purchase of low-calorie foods from school vending machines: a cluster-randomized controlled study. *J Sch Health.* 2012;82(Suppl 3):115–22.
- Wang YC, Ludwig DS, Sonnevile K, et al. Impact of change in sweetened caloric beverage consumption on energy intake among children and adolescents. *Arch Pediatr Adolesc Med.* 2009;63(Suppl 4):336–43.
- Duffey KJ, Poti J. Modeling the effect of replacing sugar-sweetened beverage consumption with water on energy intake, HBI score, and obesity prevalence. *Nutrients.* 2016;8(Suppl 7):395.
- Jaime PC, Lock K. Do school based food and nutrition policies improve diet and reduce obesity? *Prev Med.* 2009;48(Supl 1):45–53.
- Story M, Nannery MS, Schwartz MB. Schools and obesity prevention: creating school environments and policies to promote healthy eating and physical activity. *Milbank Q.* 2009;87(Supl 1):71–100.
- Boletín Oficial de la Junta de Andalucía. Resolución de 9 de noviembre de 2016, de la Secretaría General Técnica, por la que se acuerda someter a información pública el Anteproyecto de Ley para la promoción de una vida activa y una alimentación equilibrada en Andalucía. *BOJA Núm.* 219; 15 de noviembre de 2016:145–6. Available at: [http://www.juntadeandalucia.es/boja/2016/219/BOJA16-219-00002-19825-01\\_00102123.pdf](http://www.juntadeandalucia.es/boja/2016/219/BOJA16-219-00002-19825-01_00102123.pdf)
- Boletín Oficial de la Región de Murcia. Decreto Núm. 97/2010, de 14 de mayo, por el que se establecen las características nutricionales de los menús y el fomento de hábitos alimentarios saludables en los centros docentes no universitarios: 44. *Boletín Oficial de la Región de Murcia Núm.* 114; 20 de mayo de 2010:26214–20. Available at: <http://borm.carm.es/borm/documento?obj=anu&id=402158>
- Storcksdieck Genannt Bonsmann S. Comprehensive mapping of national school food policies across the European Union plus Norway and Switzerland. *Nutr Bull.* 2014;39(Supl 4):369–73.
- Adamson A, Spence S, Reed L, et al. School food standards in the UK: implementation and evaluation. *Public Health Nutr.* 2013;16(Suppl 6):968–81.
- Bertin M, Lafay L, Calamassi-Tran G, et al. School meals in French secondary state schools: do national recommendations lead to healthier nutrition on offer. *Br J Nutr.* 2012;107:416–27.
- Barquera S, Campos I, Rivera JA. Mexico attempts to tackle obesity: the process, results, push backs and future challenges. *Obes Rev.* 2013;14(Supl 2):69–78.
- Boletín Oficial de las Islas Baleares. Resolución del director general de Innovación y Comunidad Educativa en relación con las cafeterías de los IES, el servicio escolar de comedor en los centros públicos no universitarios y las escuelas matinales para el curso escolar 2016–2017. *BOIB Núm.* 73; 11 de junio de 2016: 17989–95. Available at: <http://www.caib.es/eboifront/es/2016/10501/seccion-iii-otras-disposiciones-y-actos-administra/472>
- Royo-Bordonada MA. Más allá del impuesto a las bebidas azucaradas. Por unas políticas alimentarias a la altura de las necesidades de salud pública. *Blog de las Sociedades Científicas de SESPAS*, 14 de diciembre de 2016. Available at: <http://sespas.elsevier.es/articulos/mas-alla-del-impuesto-a-las-bebidas-azucaradas-por-unas-politicas-alimentarias-a-la-altura-de-las-necesidades-de-salud-publica/>