

Brief original article

Trends in frequency of type 2 diabetes in Mexico and its relationship to dietary patterns and contextual factors



Guadalupe Soto-Estrada^a, Laura Moreno Altamirano^{a,*},
Juan José García-García^a, Iván Ochoa Moreno^b, Martín Silberman^{c,d}

^a Departamento de Salud Pública. Facultad de Medicina de la Universidad Nacional Autónoma de México, Ciudad de México, México

^b Department of Economics and Related Studies, University of York, United Kingdom

^c Instituto de Ciencias de la Salud, Universidad Nacional Arturo Jauretche, Buenos Aires, Argentina

^d Hospital de Alta Complejidad El Cruce, Nestor Kirchner, Buenos Aires, Argentina

ARTICLE INFO

Article history:

Received 13 April 2017

Accepted 8 August 2017

Available online 6 November 2017

Keywords:

Diabetes

Eating habits

Indicators

Socioeconomic

ABSTRACT

Objective: To analyse the evolution of the frequency of type 2 diabetes (T2D) and its relationship to eating patterns in Mexico from 1961 to 2013, and the Gini coefficient, Human Development Index (HDI) and Gross Domestic Product (GDP). Mexico ranked sixth in world prevalence of diabetes in 2015 with an estimated 11.4 million Mexicans affected.

Method: Using data from the Balance Sheets Food published by the Food and Agriculture Organization of the United Nations (FAO), the means of apparent food consumption (kcal/person/day) were grouped by decades. Data for mortality rate for diabetes were obtained from 1990 until 2015. Spearman's correlation coefficient was calculated between the diabetes mellitus mortality rate and all food groups. Pearson's correlation explored the relationship between socio economic indicators and the prevalence of T2D diabetes.

Results: The mortality rate for T2D has increased over the last decades. An increase of 647.9 kcal/person/day in apparent food consumption was observed. Cereal and legume consumption decreased, while apparent sugar, animal food and animal fat and vegetable oil consumption increased substantially. HDI and GDP showed a directly proportional relationship to diabetes. Spearman's correlation coefficient was statistically significant only for sugar. The Gini coefficient suggests that in lower inequalities there is an increased frequency of diabetes.

Conclusions: The increase in the mortality rate of type 2 diabetes was constant during the study period, which coincides with the increase in energy density of Mexican eating patterns from 1961 to 2013. The higher the Gini coefficient, HDI and GDP, the higher the mortality observed for diabetes.

© 2017 SESPAS. Published by Elsevier España, S.L.U. This is an open access article under the CC BY-NC-ND license (<http://creativecommons.org/licenses/by-nc-nd/4.0/>).

Tendencia en la frecuencia de diabetes tipo 2 en México y su relación con patrones alimentarios y factores contextuales

RESUMEN

Objetivo: Analizar la evolución de la frecuencia de la diabetes tipo 2 y su relación con los patrones alimentarios en México de 1961 a 2013, así como el coeficiente de Gini, el índice de desarrollo humano (IDH) y el producto interno bruto (PIB). México ocupó el sexto lugar en la prevalencia mundial de diabetes en 2015, con una estimación de 11,4 millones de mexicanos afectados.

Método: Utilizando los datos del balance de alimentos de la Organización de las Naciones Unidas para la Agricultura y la Alimentación (FAO) se agruparon por décadas las medias de consumo aparentes de alimentos (kcal/persona/día). Se analizaron datos sobre la diabetes de 1990 hasta 2015. Se realizó una correlación de Spearman entre la tasa de mortalidad por diabetes y el consumo de los distintos grupos de alimentos. La correlación de Pearson exploró la relación entre los indicadores socioeconómicos y la prevalencia de diabetes.

Resultados: La tasa de mortalidad por diabetes tipo 2 aumentó consistentemente. Se observó un incremento de 647,9 kcal/persona/día en el consumo aparente de alimentos. Los cereales y las legumbres disminuyeron, mientras que los azúcares, los alimentos y las grasas animales, y los aceites vegetales, aumentaron. La correlación de Spearman fue estadísticamente significativa solo para el azúcar. A mayores IDH y PIB, mayor fue la prevalencia de diabetes. El coeficiente de Gini sugirió que, a menor desigualdad, mayor frecuencia de diabetes.

Palabras clave:

Diabetes

Patrones alimentarios

Indicadores

Socioeconómicos

* Corresponding author.

E-mail address: lamorealmx@yahoo.com.mx (L. Moreno Altamirano).

Conclusiones: El aumento en la tasa de mortalidad de la diabetes tipo 2 fue constante durante el periodo de estudio, lo cual coincide con el aumento de la densidad energética de los patrones de alimentación en México de 1961 a 2013. A mejor coeficiente de Gini, IDH y PIB, se observó una mayor mortalidad por diabetes.

© 2017 SESPAS. Publicado por Elsevier España, S.L.U. Este es un artículo Open Access bajo la licencia CC BY-NC-ND (<http://creativecommons.org/licenses/by-nc-nd/4.0/>).

Introduction

According to the International Diabetes Federation, Mexico ranked sixth in the world's prevalence of diabetes in 2015 with an estimated 11.4 million Mexicans affected by the disease, increasing to 17.5 million by 2040.¹ Overall prevalence of type 2 diabetes (T2D) in 2015 was 8.8%; approximately 75% of people with the disease were living in low and middle-income countries. The fastest increase of cases occurred in regions where the economy moved from low to middle-income. In low and middle-income regions, the number of people with diabetes will increase 150% over the next 25 years.¹

The Encuesta Nacional de Salud (ENSA) 2000 and the Encuesta Nacional de Salud y Nutrición (ENSANUT) 2006, 2012 and 2016 point out that the prevalence of diabetes in Mexico presents a heterogeneous pattern; it was higher in urban areas (8.2%, 15.5%, 9.7%, 9.4%, respectively) than in rural areas (5.6%, 10.4%, 7% y 9.2%, respectively). However, in the south of the Mexico, which is the least developed area, the death rate from diabetes rose 128% between 1980 and 2000, while in the north this increase was 32.5%.^{2,3}

Diabetes mellitus is a chronic disease characterized by increased blood glucose and metabolic disorders.^{4,5} Diagnosis is made late and often occurs when there is one or numerous complications.⁴ Diabetes is the leading cause of acquired blindness at working age in Mexico. It is also the leading cause of non-traumatic lower limb amputations and chronic kidney failure.^{4–6} According to ENSA 2000 and ENSANUT 2006, 2012 and 2016, acquired blindness has increased from 6.4% to 9.9% between 2006 and 2016, lower limb amputations from 1.9% to 5.5%.^{2,3}

The demand for care services for diabetes and its complications has also increased.⁷ In several countries this condition consumes between 5% and 20% of the budget allocated to health.⁸ According to Barquera et al.,⁹ the percentage of spending on diabetes care in Mexico is on average 15.7% of total spending on health. These authors mentioned that the costs of diabetes in Mexico reflect an increase of 8% in 5 years.¹⁰

Given that overweight and obesity are the most important risk factors for developing diabetes, it is worth noting that the combined prevalence of overweight and obesity in the adults in Mexico has increased 15.2% over the last twelve years. In 2012 this prevalence was 71.2% (ENSANUT 2012),^{3,11} and has increased to 72.5% (ENSANUT-MC) in 2016.

Obesity is a chronic disease of multifactorial aetiology that develops from the interaction of the influence of social, behavioural, psychological, metabolic, cellular and molecular factors. Generally, it is defined as excess fat (adipose tissue) in relation to weight.¹²

The above scenario occurs in parallel with the so-called “nutritional transition”, that initially occurred in high-income and later in low-income countries, first in urban areas and then in rural areas.^{13,14} Urbanization has led to a tendency towards more sedentary activities and a greater increase in ultra-processed and high caloric foods consumption.

The purpose of this study is to analyse the evolution of the frequency of T2D and its relation to changes in diet in Mexico from 1961 to 2013, the Gini coefficient, the Human Development Index (HDI) and Gross Domestic Product (GDP).

The Gini coefficient measures the degree to which the distribution of income among individuals or households within an economy deviates from a perfectly equal distribution. A Gini coefficient of 0 indicates to perfect equality, while a ratio of 100 implies perfect inequality. The HDI has three dimensions (long and healthy life, education and decent standard of living). The HDI will be greater when the disadvantages do not predominate in a particular dimension and/or when the internal inequality in the components of a dimension is smaller. Gross Domestic Product constitutes the sum of the monetary values of the goods and services produced by a country, excluding the duplication derived from buying and selling operations that exist between different producers.

Method

An ecological study was performed using data from the Balance Sheets Food (BSF) published by FAO, the means of apparent food consumption (kcal/person/day) for Mexican population, during the period from 1961 to 2013 were grouped by decades.¹⁵ The proportion of kcal/person/day for each food group was calculated in each decade. BSF data show food availability and apparent or average apparent consumption of quantities and groups the main food for human consumption in different countries per year. This information does not provide data access and actual consumption of food, nor does it show differences by population groups. However, since the BSF are produced each year, they enable comparisons between countries and show trends in food consumption in a country over time.¹⁵ Variables are means of apparent food consumption (kcal/person/day), proportion of kcal/person/day for each food group, mortality rate, incidence and prevalence for diabetes, Gini coefficient, HDI and GDP. The mortality rates for diabetes in Mexico from 1990 until 2015 were obtained from the INEGI Mortality Statistics,¹⁶ from the base that is generated from the “Interactive Data Query”. The following were selected from the keys corresponding to diabetes from 1990 to 1997, registered in version 9 of the International Classification of Diseases (ICD): diabetes mellitus with no mention of complication, diabetes with ketoacidosis, diabetes with neurologic disorders, diabetes with peripheral circulatory disorders, diabetes with other manifestations specified, diabetes with renal manifestations, diabetes with manifestations of ophthalmic complications not specified. For the period 1998 to 2015 all registered diagnoses for diabetes were considered according to ICD-10. Rates were calculated per 100,000 inhabitants according to the age group reported with CONAPO population projections (1990–2009 and 2010–2050). Subsequently, the incidence of diabetes and the number of new cases reported from 2000 to 2015 we analysed.

Spearman's correlation coefficient was then calculated to investigate whether there is a relationship between the diabetes mellitus mortality rate with the consumption of all food groups (kcal/person/day). Finally, Pearson's correlation was applied to explore the relationship between the Gini coefficient, HDI, GDP (Information from the World Bank from 1990 to 2012)¹⁷ and the prevalence of T2D for 1999, 2006 and 2012, using the data from the National Health and Nutrition Surveys.¹¹ The significant value of $p < 0.05$ was statistically considered.

Results

Diabetes

The mortality rate for T2D has increased progressively over the last decades. Between 1990 and 2015 the death rate increased from 29.6 to 81.4 per 100 000 inhabitants (Fig. 1). In 1990, T2D deaths accounted for 6.1% of all deaths and by 2015 accounted 15%. In 1990, the mortality rate for T2D was 33.4 for women and 25.7 for men, and by 2015 the rate for men (81.0) was practically equal to that for women (81.8) (Fig. 1).

The incidence rate has declined since 2011, after an important increase between 2000 and 2004 and slight fluctuations between 2005 and 2010 (Fig. 2). This could be attributed to under-registration of cases or because patients go to other types of medical institutions.

Eating patterns

Apparent consumption increased 647.9 kcal/person/day between 1961 and 2013. The significant increase from 2316 to 3209 kcal/person/day occurred between 1961 and 1981 (893 kcal/person/day), and then (from 1982 to 1999) no significant changes were observed around 3100 kcal/person/day. Over the next 10 years, between 2000 and 2007 an increase of more than 250 kcal/person/day was observed. From 2008, the apparent consumption of kcal/person/day decreased again (Fig. 3).

As for food groups, it became clear that cereals and legumes (beans) apparent consumption decreased (12.9% and 3.1%, respectively), while sugars, animal foods, animal fats and vegetable oils consumption increased substantially (3.0%, 7.4%, 1.5% and 4.0%, respectively). Fruits and vegetables, roots and tubers and alcoholic beverages consumption showed a slight increase (Table 1).

An increase both in the mortality rate due to diabetes mellitus and in the total kcal/person/day consumption from 1990 to 2007. As of 2008, although the kcal/person/day consumption decreased, mortality continues with a progressive increase. In 2011, there is a slight decrease in the mortality rate that coincides with the lowest level of kcal/person/day recorded in this period. Figure 4 shows a progressive increase in both sugar and sweetener consumption and the diabetes mortality rate, the others food groups did not show a statistically significant correlation.

Socio-economic indicators

The Gini coefficient reached a negative correlation and statistical significance ($r: 0.7547$ and $p < 0.05$), suggesting that in lower inequalities there is increased frequency of diabetes. The HDI showed a directly proportional relation to diabetes ($r: 0.9726$ and $p < 0.05$), implying that where there are better economical, educational and health conditions (HDI components), the frequency of the disease was higher. GDP was similar to HDI ($r: 0.9729$ and $p < 0.05$) (Table 2).

Discussion

Based on the claim that obesity is the leading cause of diabetes, this study argues that a key factor in interpreting the high prevalence of T2D is the abandonment of the traditional diet and the adoption of a high-energy density diet based on ultra-processed food. On the one hand urbanization has led to more sedentary activities; physical activity, particularly in workplace, has decreased significantly (growth of the tertiary sector or services), and with this the number of calories consumed. On the other hand, technological advances in food processing and packaging developed to control microorganisms, taste and temperature have reduced

food costs and preparation times.^{18,19} Consequently, individuals now consume a greater variety of foods and more frequently during the day. Likewise, a greater increase in consumption has been observed in the foods most affected by this mass industrial preparation (ultra-processed food), which in turn means a higher caloric intake. These foods can be designed to stimulate responses in the affective system and evidence suggests that people with obesity consume them in greater quantity.²⁰ The observed effect therefore suggests a change in the pattern of food consumed, and an increase in the size of the portions.

In Mexico, T2D is an epidemic that show different facets. There has been a significant increase in recent years in chronic degenerative diseases but, have reduced the incidence rate probably because of the small number of people with the disease requesting consultation, rather than the number of cases having decreased.

ENSANUT-MC 2016 point out that the prevalence of diabetes in Mexico presents a heterogeneous pattern. It was higher in urban areas (9.4%) than in rural ones (9.2%) but the difference is very small.³ However, in less developed areas death rate from diabetes increased. According to Barquera et al.², the death rate from diabetes rose 128% between 1980 and 2000, in one of the least developed areas in México, while in one of the richest areas, this increase was 32.5%.² The increase shows that the disease is already affecting the most socially disadvantaged population.

T2D is seen mainly in high-income countries but tends to be higher among the less affluent. It is more prevalent among the richest sectors of the population in low-income countries, especially in urban areas. It has also been argued that in some middle-income countries the disease is more common in the poorest sectors of society.¹

The increased frequency of diabetes is the result of biological factors such as the genetic-familial component, the forms of distribution of body fat and the aging process. These are coupled with the social determinants of health generated through urbanization, which have led to an increase in consumption of ultra-processed foods.^{21–26}

According to global health PAHO estimates chronic non-communicable diseases associated with obesity have steadily increased and have become the leading cause of death and disability in 2012 in the Americas (55%).²⁷

In Mexico, the combined prevalence of overweight and obesity in adults was 72.5%. Prevalence in women was higher in rural areas (8.4%) than in urban ones (1.6%). Prevalence increased 10.5% in adult males these with respect to 2012 (Health and Nutrition Survey midway 2016).³

Cawley et al.²⁸ revision of the literature on the economic causes of obesity could help explain the phenomenon in Mexico. There are several explanations for the obesity increase. However, sometimes the lack of reliable data makes the increased difficult to estimate. First, income could have effect on obesity. Evidence suggests that increases in income in poor individuals in developing countries have an impact on increased expenditure on food, increased calorie consumption, and a slight increase in weight in adults. However, in middle-income individuals in developing countries, this is not observed. What is inferred is that the relationship between income and expenditure on food is an inverted “u” form. At very low incomes, the proportion on food expenditure is high until it reaches a maximum and from a certain threshold, increases in the income are accompanied by reductions in the proportion of expenditure on food. Second, there is a decrease in energy-dense food prices relative to healthier, lower-calorie foods. The consequence would be that if both types of goods were “normal”, people would increase the consumption of caloric foods by reducing the consumption of healthy foods such as fruits and vegetables. However, changes in commodity prices may be due to geographic differences in demand or changes over time. This would make it difficult to

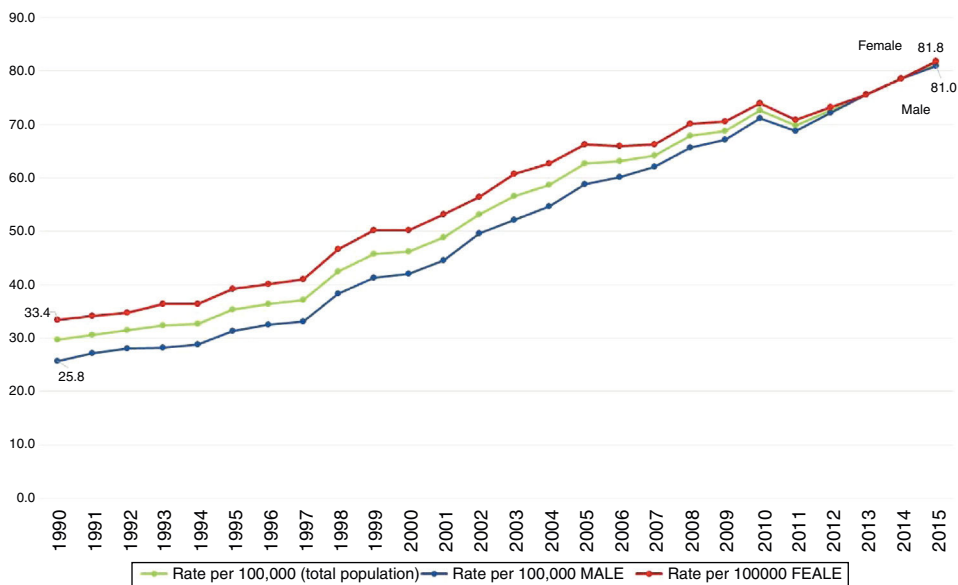


Figure 1. Rates of mortality for Diabetes mellitus in Mexico, 1990-2015.

Source: Prepared by the authors from INEGI, mortality statistics (<http://www.inegi.org.mx/est/contenidos/proyectos/registros/vitales/mortalidad/tabulados/ConsultaMortalidad.asp>). Rates calculated with the 2005-2050 projections CONAPO, Mexico, 2015 (<http://www.conapo.gob.mx/es/CONAPO/Proyecciones>).

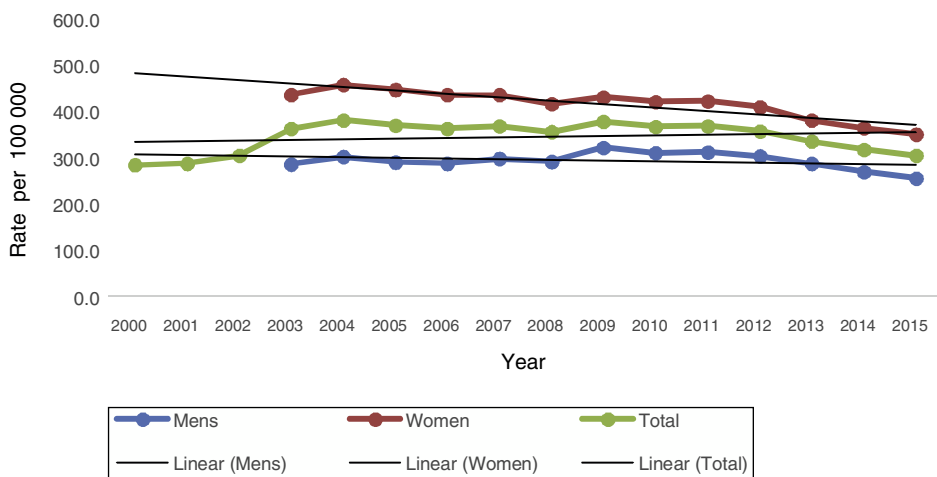


Figure 2. Incidence rate. Diabetes 2. Mexico 2000-2015.

Source: Prepared by the authors from SUIVE/DGE/Secretaría de Salud/Estados Unidos Mexicanos (http://www.epidemiologia.salud.gob.mx/anuario/html/morbilidad_nacional.html).

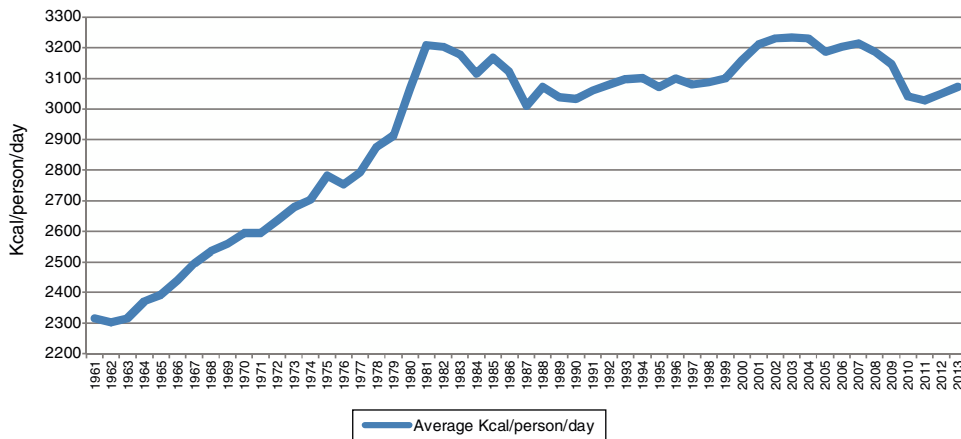


Figure 3. Average apparent consumption of Kcal/person/day, Mexico 1961-2013.

Source: Prepared by the authors from Balance Sheets Food published by FAO. Statistical Databases. 1961-2013 (<http://faostat.fao.org>).

Table 1
Means of apparent food consumption (kcal/person/day) by decades. Mexico, 1961 to 2013.

Food groups	1961-71	%	1972-80	%	1981-90	%	1991-00	%	2001-10	%	2011-13	%
Kcal/person/day	2401.8		2714.8	313	3048.9	333.8	2991	90	3081	32	3049.7	
Cereals	1342.1	55.8	1382	50.9	1457.8	57.8	1384.2	46.2	1346.9	43.7	1309.3	42.9
Animal fats	26.2	1.0	37.7	1.4	63.3	2.1	66.6	2.8	65.4	2.1	67.2	2.5
Vegetable oils	136.3	5.6	160.6	5.9	255.4	8.4	253.8	8.5	244.0	7.9	294.0	9.6
Food of animal origin	255.6	10.6	366.3	13.5	418.4	13.7	420.8	14.1	524.2	17.0	546.7	18.0
Sugar and sweeteners	291.0	12.2	398.0	14.6	443.2	14.5	461.0	15.4	474.7	15.4	664.3	15.2
Fruits and vegetables	92.2	3.8	108.5	4.0	133.4	4.4	133.5	4.5	152.7	5.0	141.3	4.7
Roots and tubers (potatoes)	22.1	0.92	24.1	0.89	22.7	0.84	25.5	0.85	31.0	1.0	30.3	1.0
Legumes	160.4	6.6	147.2	5.4	153.3	5.0	128.8	4.3	115.1	3.7	106.0	3.5
Alcoholic beverages	34.8	1.4	44.0	1.6	53.1	1.7	59.2	2.0	55.6	1.8	55.7	1.8

Source: Prepared by the authors from Balance Sheets Food published by FAO. Statistical Databases. 1961–2013 (<http://faostat.fao.org>).

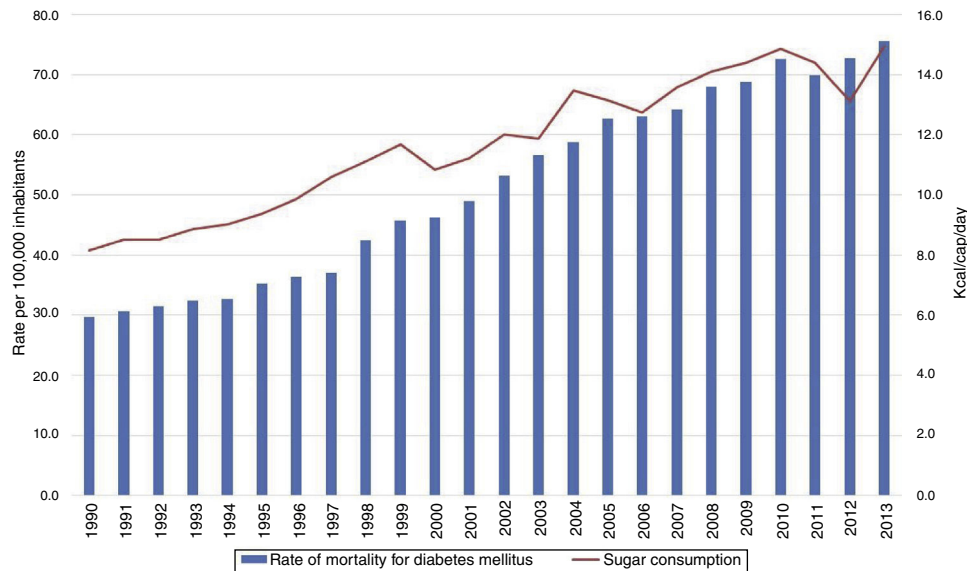


Figure 4. Rate mortality for diabetes mellitus and percentage of sugar consumption (Kcal/cap/day) in Mexico.

Source: Prepared by the authors from INEGI, mortality statistics (<http://www.inegi.org.mx/est/contenidos/proyectos/registros/vitales/mortalidad/tabulados/ConsultaMortalidad.asp>). Rates calculated with the 2005–2050 projections CONAPO, Mexico, 2016 (<http://www.conapo.gob.mx/es/CONAPO/Proyecciones>), United Nations for Food and Agriculture. Statistical Databases 1961–2013 (<http://faostat.fao.org>).

calculate the impact of prices on the weight of the population. These two hypotheses could explain the increase in weight of the lower income population in Mexico.²⁸

With regard to the above, Moreno-Altamirano et al.⁶ have documented that between the years 2000 and 2012 prices of fresh fruit, tortillas and beans increased relative to soft drinks (33.4%, 60.1%, 71.8%, respectively) and to chips (2.9%, 23.1%, 32.2%, respectively).

Furthermore, there is little regulation in the food market. In Mexico, in 2015, for example, front labeling was introduced for foods and processed beverages. However, it is incomprehensible to consumers and even nutrition students do not understand it. Front labeling also represents a risk because of the high amounts of sugar it promotes.²⁹ The free market process has led products displacing the usual traditional diet, even in the most remote locations. This has negatively affected the national production and local marketing of food and beverages and has favoured the ingestion of ultra-processed foods, snacks, and sugary high drinks (fat, sugar and other refined carbohydrates), costing less than some natural foods.^{27,30} Coupled with poor local agriculture subsidy, food culture has shaped and changed eating patterns.^{31–33}

With respect to the above, Luiselli³⁴ indicates that in Mexico agricultural GDP per capita at constant prices (i.e., net of inflation) has decreased 11.4% when comparing the period 1978–1985 to the period 2008–2014. The trend is also due to lack of public support for the agriculture. The reduction in the promotion of activity in the sector has been so substantial that one can speak of “abandonment”, while public investment in the sector reaches values close to zero.

Table 2

Gini coefficient, human development index and the gross domestic product and prevalence of diabetes mellitus in Mexico for the period 1999, 2006 and 2012.

Country	Indicator		
	Economic	Health DM	
		r	p
Mexico	Gini	−0.7547	<0.05
	IHD	0.9726	<0.05
	GDP	0.9729	<0.05

Source: <http://datos.bancomundial.org/pais/mexico>, <http://datos.bancomundial.org/indicador/SI.POV.GINI?locations=MX>, <http://hdr.undp.org/en/countries/profiles/MEX>, Encuestas Nacionales de Salud 1999, 2006 and 2012.

The consumption of whole grain and its relation to health benefits has been well documented. Whole grains have also been shown to prevent insulin resistance and metabolic syndrome, including diabetes, dyslipidemia and hypertension.³⁴

At the same time, intakes of legumes has reduced in Mexico.³³ Leguminous consumption is relevant for T2D, since legumes have a low glycemic index and are good sources of fiber, amylose starch and phytochemicals, such as phenols, lectins and phytates that lead to a slow absorption of their carbohydrate content of from the intestine.³⁰ Gaesser³⁵ concluded that a low-fat diet with a high carbohydrate content, with an emphasis on high-fiber carbohydrates, particularly cereal fiber, has a beneficial influence on health and weight control.³⁵ Likewise, the risk of diabetes or metabolic

syndrome is greater in those who eat less fruit and vegetables; consumption of fruit and vegetables was associated with a reduction in the risk of coronary heart disease and T2D.³⁶ On the other hand, Aune et al.³⁷ found a of 21% increase in the relative risk of diabetes for red meat and 41% for processed meat when comparing the high and low intake of these products.

This study found that sugar consumption experienced rapid growth from 1960 to 1980, since then consumption has continued to grow moderately but steadily. Vegetable oil and animal fat apparent consumption increased substantially in the early 1980s, and then continued to rise slightly. It may be inferred that the increase in apparent consumption of vegetable oil and sugar is largely due to processed and ultra-processed products with high energy density, such as carbonated beverages with added sugar and packaged foods rich in fat. In this study, a statistically significant correlation was found between diabetes mortality and increase in sugar consumption (Fig. 4). In this regard, a diet with a high glycemic load has been associated with high postprandial blood glucose and the risk of T2D, as well as high levels of plasma triglycerides and low levels of high-density lipoprotein.^{38,39}

Studies of the American region show that the relative contribution of ultra-processed products to the global food energy intake increased from 19% to 55%.^{31,32} Other studies show that sales of sugary drinks in 13 Latin American countries between 2000 and 2013 increased 33% on average, and ultra-processed snacks rose 56%.²¹ Higher intakes of such sugary soft drinks increase the risk of T2D as it increases body weight and glucose in blood.³⁹ Mexico is the Latin American country with the highest annual consumption of ultra-processed food and beverages (220 kg per capita) and has the highest average BMI (28).²¹

In Mexico, no studies have been done in this regard, however the ENSANUT 2016 mentioned that only 26.9% of adolescents consume vegetables regularly, 39.2% fruits and 63.1% legumes. While 83.9% regularly consume non-dairy sugary drinks, 59.4% snacks, sweets and desserts and 50.3% sweet cereals. In adults, it was observed that 42.3% consume vegetables regularly, 51.4% fruits, 70.0% legumes. On the other hand, it was noted that 85.3% regularly consume non-dairy sugary drinks, 38% snacks, sweets and desserts and 45.6% sweet cereals.³

In line with literature, the findings of this study reveal that obesity and chronic diseases such as diabetes continue to rise at slower pace, and it is possible to consider that kcal/person/day apparent consumption have reached a possible limit or “saturation balance”.

This study revealed that where there are better living conditions (HDS, GDP and Gini), there is a higher prevalence of T2D, as confirmed by the available information.¹ At the same time it has been documented that both diabetes and obesity are already affecting the poorest population.² This could be explained by the greater availability of high energy and ultra-processed foods and beverages. Among the poor or low-income strata population an increase in these conditions has been observed, coupled with poor diets characterized by ultra-processed food and beverages. Moreno-Altamirano et al.³³ observed in 2014 that the lower-income population in Mexico spends 4.9 times less on fruits than the better off. In the higher income sector, both beef and fish expenditure were higher (3.9 and 5.9 times, respectively). Milk expenditure was lower than in industrialized beverages in the poorest strata. On the other hand, people with higher incomes spent more on milk and dairy products and 2.7 times less on industrialized beverages.

While dietary patterns of the population are related to their income, income does not necessarily determine adequate food. According to the theories of consumption proposed by Galbraith⁴⁰ and Duesenberry,⁴¹ choice of food has to do with the “styles of collective life”, meaning that these styles are not adopted through individual decisions but through behaviours influenced by the

social and economic environment in which subjects live. Taking these theories into account it can be concluded that individual behaviour is socially imposed. The individual capacity to decide and freely choose what to eat can be restricted, in addition to revenue, advertising and market supply. This issue should be further analysed in depth from a theoretical and empirical viewpoint.

We consider that in addition to addressing the proposals to individuals, there must be focus on the underlying social determinants of T2D. These determinants have led to an “obese” environment where diet is not dependent on individual actions. Food consumption and diets evolve over time under the influence of many factors and complex interactions; income, prices, individual preferences, beliefs, cultural traditions, as well as geographical, environmental, social and economic factors. As a result of the socio-economic conditions motivated by the application of the public policies proposed after the crisis of 1982, Mexican economy began a process of commercial opening that culminated with the signing of the North American Free Trade Agreement.^{42,43} Since then, food behaviour has been insensitive but socially imposed, and the ability of individuals to decide and freely choose what to eat, for example, has been mediated by their income and advertising market supply. The consumption of certain foods depends on the immediate cultural and social environment, in our country the market structure is inserted decisively. Thus, the food carries out his choice from a pre-selection that have already made large commercial organizations that tend to homogenize and standardize the supply of food.

In order to combat the underlying social determinants of type T2D, which involves paying attention to the most vulnerable societies, substantial changes are needed in health policy, regulation of ultra-processed food and sugary soft drinks, and strengthen social and economic structures. There is need in Mexico to analyse information on socio economic strata, in both rural and urban contexts based on income deciles, the Gini coefficient and HDI components (economic, educational and health conditions).

What is known about the topic?

It is known that the prevalence of diabetes type 2 had been higher in high-income countries, however, it has now been documented that it is tending to be more prevalent among lower-income societies. In this regard, they are analyzing the modification of the diet and the increase in the consumption of ultra-processed foods, which for their price are more accessible for low-income and poorly educated populations.

What does this study add to the literature?

It is shown that the Mexican diet has moved away from the traditional one to adopt a high energy density which has been reflected in the increase of diabetes in Mexico. It provides elements to infer that the high consumption of sugars and vegetable oils is due to the increase in consumption of ultra-processed and offers arguments for conducting research aimed at more vulnerable societies.

Editor in charge

Clara Bermúdez-Tamayo.

Transparency declaration

The corresponding author on behalf of the other authors guarantee the accuracy, transparency and honesty of the data and

information contained in the study, that no relevant information has been omitted and that all discrepancies between authors have been adequately resolved and described.

Authorship contributions

Guadalupe Soto-Estrada. She proposed the conception and design of the work, did the review of the databases on diabetes and food, analyzed that information and interpreted. It also reviewed the socio-economic indicators. She wrote the article, made important intellectual contributions and approved the final version for publication.

Laura Moreno Altamirano. She participated intellectually in the conception and design of the work and in the interpretation of the data. She critically reviewed the writing of the article and made important intellectual contributions. Approved the final version for publication. She is responsible and guarantor that all the aspects that integrate the manuscript have been reviewed and discussed among the authors with the purpose of that they are exposed with the maximum precision and integrity.

García-García Juan José. He participated in the conception and design of the work, in the collection, analysis and interpretation of data. He reviewed the writing of the article and made important intellectual contributions. Approved final version for publication.

Héctor Iván Ochoa Moreno. He participated in the conception and design of the work, in the collection, analysis and interpretation of data. He reviewed the writing of the article and made important intellectual contributions. Approved final version for publication.

Martín Silberman. He participated in the design of the work, in the interpretation of data. He reviewed the writing of the article and made important intellectual contributions. Approved final version for publication.

Dr. Laura Moreno Altamirano (Corresponding author).

In the name of the rest of the authors, she guarantees the accuracy, transparency and honesty of the data and information contained in the study; that no relevant information has been omitted; and that all discrepancies between authors have been adequately resolved and described.

Funding

Research carried out thanks to the UNAM-DGAPA-PAPIIT Program IN310316 and Department of Public Health, Faculty of Medicine, UNAM. Mexico.

Conflicts of interest

The authors declare that they have no conflict of interest.

Acknowledgments

To Ing. David Limón for his technical advice. To Dr. Dewi Hernández Montoya for her participation in the elaboration of the food database.

References

- Atlas de la Diabetes de la FID, 7^a ed. 2014. (Accessed 10/03/2016.) Available at: <http://www.diabetesatlas.org/key-messages.html>
- Barquera S, Tovar-GV, Campos NI, et al. Geography of diabetes mellitus mortality in Mexico: an epidemiologic transition analysis. *Arch Med Res.* 2003;34:407–14.
- ENSANUT-MC 2016. Encuesta Nacional de Salud y Nutrición de Medio Camino 2016. (Accessed 10/01/2017.) Available at: <http://oment.uanl.mx/ultimas-cifras-de-diabetes-en-mexico-ensanut-mc-2016/>
- Organización Mundial de la Salud. Diabetes. (Accessed 18/10/2016.) Available at: http://www.who.int/topics/diabetes_mellitus/es/
- Federación Internacional de Diabetes. (Accessed 8/09/2016.) Available at: <http://www.idf.org/about-diabetes>
- Moreno AL, Silberman M, Hernández MD, et al. Diabetes tipo 2 y patrones de alimentación de 1961 a 2009: algunos de sus determinantes sociales en México. *Gac Med Mex.* 2015;151:354–68.
- De Fronzo RA. From the triumvirate to the ominous octet: a new paradigm for the treatment of type 2 diabetes mellitus. *Diabetes.* 2009;58:773–95.
- Estimated healthcare expenditures due to diabetes in the North America and Caribbean, Region. Federación Internacional de Diabetes. (Accessed 08/03/2016.) Available at: <http://www.idf.org/sites/default/files/attachments/Poster-Diabetes-Expenditures-North-America-Caribbean.pdf>
- Barquera S, Campos NI, Aguilar SC, et al. Diabetes in Mexico: cost and management of diabetes and its complications and challenges for health policy. *Globalization and health.* 2013 (Accessed 23/11/2016.) Available at: <http://www.globalizationandhealth.com/content/9/1/3>
- Arredondo A, De Icaza E. Costos de la diabetes en América Latina: evidencias del caso mexicano. *Value in Health.* 2011;14:S85–8.
- Encuesta Nacional de Salud y Nutrición. Resultados nacionales 2012. Instituto Nacional de Salud Pública/Secretaría de Salud. (Accessed 16/03/2016.) Available at: <http://ensanut.insp.mx/informes/ENSANUT2012ResultadosNacionales.pdf>.
- Kauffer HM. Obesidad en el adulto. (Accessed 20/03/2016.) Available at: http://www.rua.unam.mx/repo_rua/temas/transversales_de_interes_general/600.tecnologia_ciencias_aplicadas/610.ciencias_medicas_medicina/6009.pdf.
- Popkin B, Adair L, Wen NS. Global nutrition transition and the pandemic of obesity in developing countries. *Nutr Rev.* 2011;70:3–21.
- Popkin BM. Global changes in diet and activity patterns as drivers of the nutrition transition. In: Kalhan SC, Prentice AM, Yajnik CS, editors. *Emerging societies – coexistence of childhood malnutrition and obesity.* Basel: Nestec Ltd, Vevey/S. Karger AG; 2009. p. 1–14.
- Food and Agriculture Organization of the United Nations. Statistical Databases (1961–2013). (Accessed 15/03/2016.) Available at: <http://www.fao.org/faostat/en>
- Instituto Nacional de Estadística y Geografía (INEGI). Consulta interactiva de datos, estadísticas de mortalidad. (Accessed 27/10/2016.) Available at: http://www.inegi.org.mx/est/lista_cubos/
- Indicadores Mundiales del Desarrollo del Banco Mundial. (Accessed 10/11/2016.) Available at: <http://datos.bancomundial.org/indicadores-del-desarrollo-mundial>
- Cutler DM, Glaeser EL, Shapiro JM. Why have Americans become more obese? *Journal of Economic Perspectives.* 2003;17:93–118.
- Ruhm CJ. Understanding overeating and obesity. *Journal of Health Economics.* 2012;31:781–96.
- Posner RA, Philipson TJ. The long-run growth in obesity as a function of technological change. John M. Olin Program in Law and Economics, Working Paper No. 78, 1999. (Accessed 9/06/2016.) Available at: <https://pdfs.semanticscholar.org/98b2/2b70a42d1b021d31d0cab2f86882e33cd101.pdf>
- Pan American Health Organization. Consumption of ultra-processed food and drink products in Latin America: trends, impact on obesity, and policy implications. Washington: OPS. 2015. (Accessed 10/06/2016.) Available at: http://www.paho.org/hq/index.php?option=com_docman&task=doc.view&Itemid=270&gid=27544&lang=en.
- Katz DL, Meller S. Can we say what diet is best for health? *Annu Rev Public Health.* 2014;35:83–103.
- Rauber F, Campagnolo PD, Hoffman DJ, et al. Consumption of ultraprocessed food products and its effects on childrens lipid profiles: a longitudinal study. *Nutr Metab Cardiovasc Dis.* 2015;25:116–22.
- Tavares LF, Fonseca SC, García RML, et al. Relationship between ultraprocessed foods and metabolic syndrome in adolescents from a Brazilian Family Doctor Program. *Public Health Nutr.* 2012;15:82–7.
- Canella DS, Levy RB, Martins AP, et al. Ultraprocessed food products and obesity in Brazilian households (2008–2009). *PLoS One.* 2014;9:e92752.
- Ludwig DS. Technology, diet, and the burden of chronic disease. *JAMA.* 2011;305:1352–3.
- OPS. Modelo de perfil de nutrientes de la Organización Panamericana de la Salud. Washington, D.C.: 2016. (Accessed 14/10/2016.) Available at: http://iris.paho.org/xmlui/bitstream/handle/123456789/18622/9789275318737_spa.pdf?sequence=9.
- Cawley J. An economy of scales: a selective review of obesity's economic causes, consequences, and solutions. *Journal of Health Economics.* 2015;43:244–68.
- Chile aprueba etiquetado frontal de advertencia contra alimentos no saludables mientras México establece etiquetado que representa un riesgo para la salud. Alianza por la Salud Alimentaria. 2015. (Accessed 8/08/2016.) Available at: <http://alianzasalud.org.mx/2015/06/chile-aprueba-etiquetado-frontal-que-advertencia-contra-alimentos-no-saludables-mientras-mexico-establece-etiquetado-que-representa-un-riesgo-a-la-salud/>.
- Venn BJ, Mann JI. Cereal grains, legumes and diabetes. *Eur J Clin Nutr.* 2004;58:1443–61.
- Monteiro CA, Levy RB, Claro RM, et al. Increasing consumption of ultra-processed foods and likely impact on human health: evidence from Brazil. *Public Health Nutr.* 2011;14:5–13.
- Martins AP, Levy RB, Claro RM, et al. Increased contribution of ultra-processed products in the Brazilian diet (1987–2009). *Rev Saúde Publica.* 2013;47:656–65.
- Moreno AL, Hernández MD, Silberman M, et al. La transición alimentaria y la doble carga de malnutrición: cambios en los patrones alimentarios de 1961 a 2009 en el contexto socioeconómico mexicano. *Archivos Latinoamericanos de Nutrición.* 2014;64:231–40.

34. Luiselli FC. Estrategias para abatir la bimodalidad agraria en México. In: Desarrollo agropecuario, forestal y pesquero. In: Agenda para el desarrollo. México: Editorial Porrúa, UNAM y Cámara de Diputados; 2007. p. 76–99.
35. Gaesser GA. Carbohydrate quantity and quality in relation to body mass index. *J Am Diet Assoc.* 2007;10:1768–80.
36. Carter P, Gray LJ, Troughton J, et al. Fruit and vegetable intake and incidence of type 2 diabetes mellitus: systematic review and meta-analysis. *BMJ.* 2010;341:c4229.
37. Aune D, Ursin G, Veierød MB. Meat consumption and the risk of type 2 diabetes mellitus: a systematic review and meta-analysis of cohort studies. *Diabetologia.* 2009;52:2277–87.
38. Clark NG. Postprandial blood glucose, cardiovascular events and all-cause mortality: how do we use postprandial glucose in clinical practice? *Clin Diabetes.* 2012;30:67–9.
39. Malik VS, Popkin BM, Bray GA, et al. Sugar sweetened beverages and risk of metabolic syndrome and type 2 diabetes mellitus. *Diabetes Care.* 2010;33:2477–83.
40. Galbraith JK. *The affluent society.* 2nd ed United States of America: Houghton Mifflin Company; 1969. p. 288.
41. Duesenberry JS. *Income. In: saving and the theory of consumer behavior.* Cambridge, MA: Harvard University Press; 1949.
42. Williamson J. What Washington means by policy reform. In: *Latin American adjustment: how much has happened?* Washington, D.C.: Williamson J. Institute for International Economics. 1990; 421–423.
43. Williamson J. The strange history of the Washington Consensus. *Journal of Post Keynesian Economics.* 2004-5;27:195–206.